



Disseminating FP Water Results

The example of the FP6 BRIDGE project

Ariane BLUM, Anne-Marie FOUILLAC
*BRGM / French Geological Survey
Water Division*

-1.89 3740.46 -625.5



Research for Policy support



Geoscience for a sustainable Earth

brgm

Outline of the presentation



- > **About BRIDGE**
- > **Dissemination strategy and final report**
- > **Conclusions – key messages**

About BRIDGE – Policy context



> Policy context

- Water Framework Directive (article 17)
 - Criteria for assessing good chemical status [...]
 - Criteria for the identification of significant and sustained upward trends [...]
- Groundwater Directive 2006/118/EC (article 3 on « criteria for assessing groundwater chemical status »)

“For the purposes of the assessment of the chemical status of a groundwater body [...] Member States shall use the following criteria:

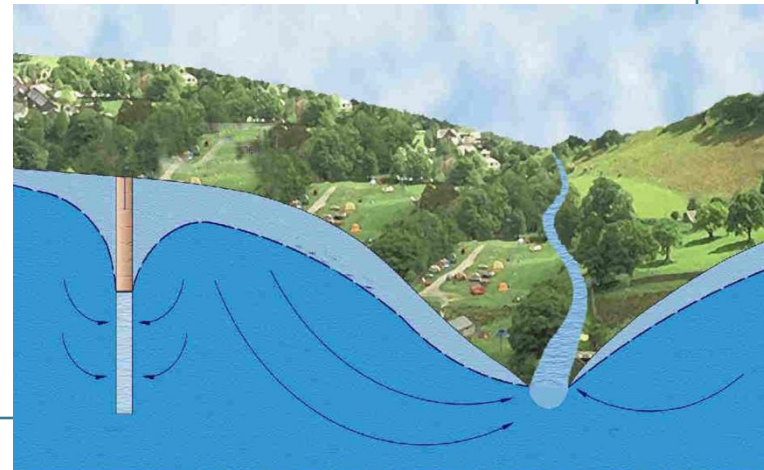
a) groundwater **quality standards** [...] (NO₃, pesticides)

b) **threshold values** to be established by Member States”

» At national, district, or groundwater body level;

» Pollutants : responsible of a risk

BRIDGE



About BRIDGE – Main objectives



> Main objective

→ *European approach to derive environmental threshold values for groundwater bodies*

- To evaluate and assemble scientific outputs to set out **criteria for the assessment of the chemical status** of groundwater
- To derive a **combined approach based on scientific results** and defined at national river basin district or groundwater body level to set up groundwater threshold values
- To **check the applicability and validity** of this approach by means of case studies at the European scale
- To carry out an environmental impact assessment taking into account the **economic and social impacts**

A real challenge!!!

> European Commission requirements:

- Applicable at different levels (national, river basin, groundwater body)
- Reflecting groundwater bodies heterogeneity
- Consistent to the WFD and other community legislation
- Scientifically sound and practicable



About BRIDGE – Project ID



Background cRiteria for the IDentification of Groundwater thrEsholds



Sixth
Framework
Programme

3. Project Identification

6FP : Priority 8, Scientific Support to Policies

Contract N° 006538 (SSPI)

Duration : 24 months

Start Date : 1st January 2005

Budget of the project :

Total budget..... 2.963 M€

EC contribution 1.877 M€

Contacts : **Co-ordinator**: Anne- Marie Fouillac (Fr)
am.fouillac@brgm.fr

Co-chair : Dietmar Müller (At)
dietmar.mueller@umweltbundesamt.at

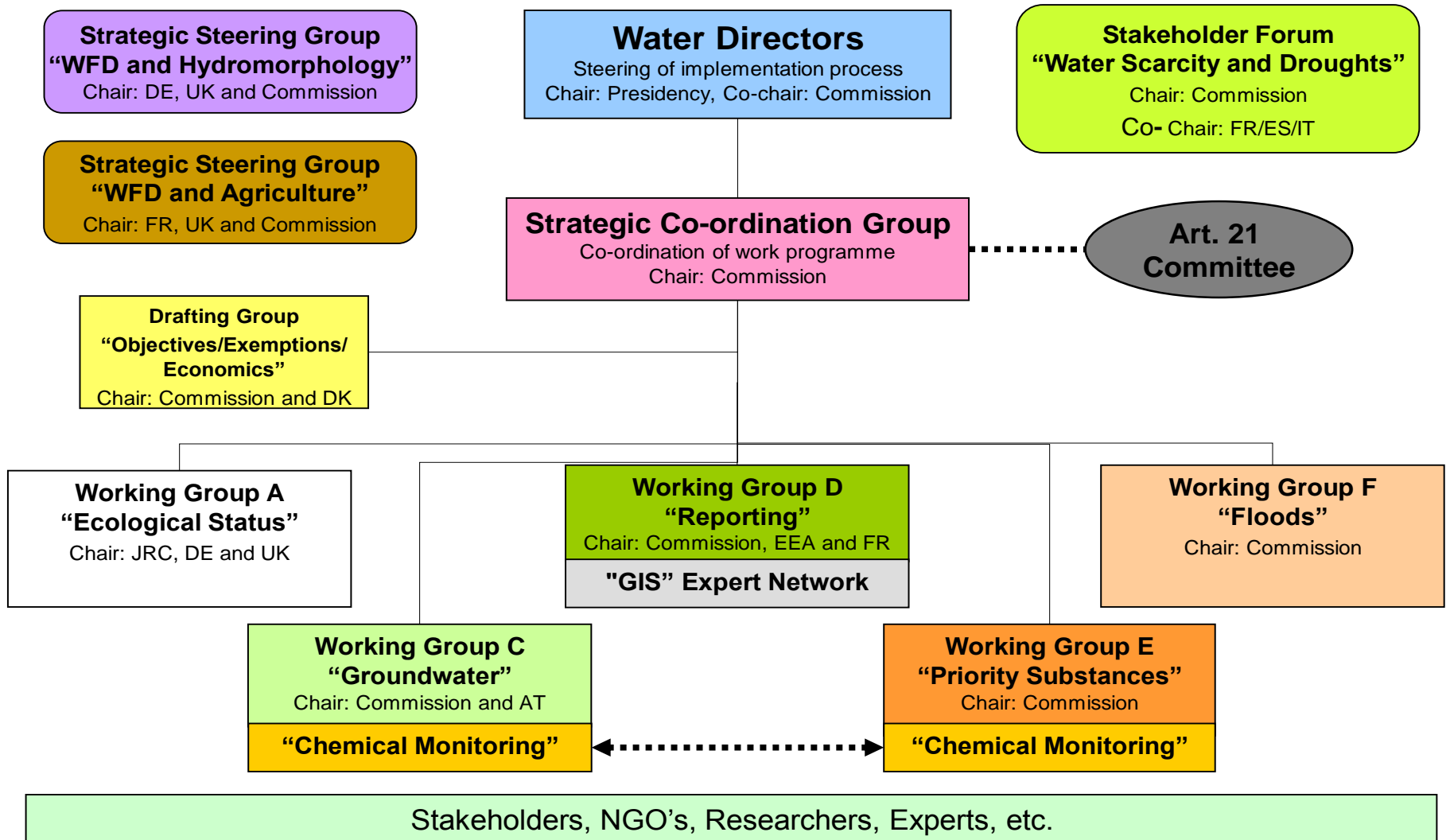
4. link with WG2C

The Advisory Committee of BRIDGE understands representatives of the Groundwater Working Group 2C (WG2C) and thus allows to establish a link with this group. The WG2C is part of the Common Implementation Strategy of the WFD. It aims both to clarify groundwater issues that are covered by the WFD and prepare the development of technical guidance documents in the light of the orientations given by the future Groundwater Directive upon its adoption.

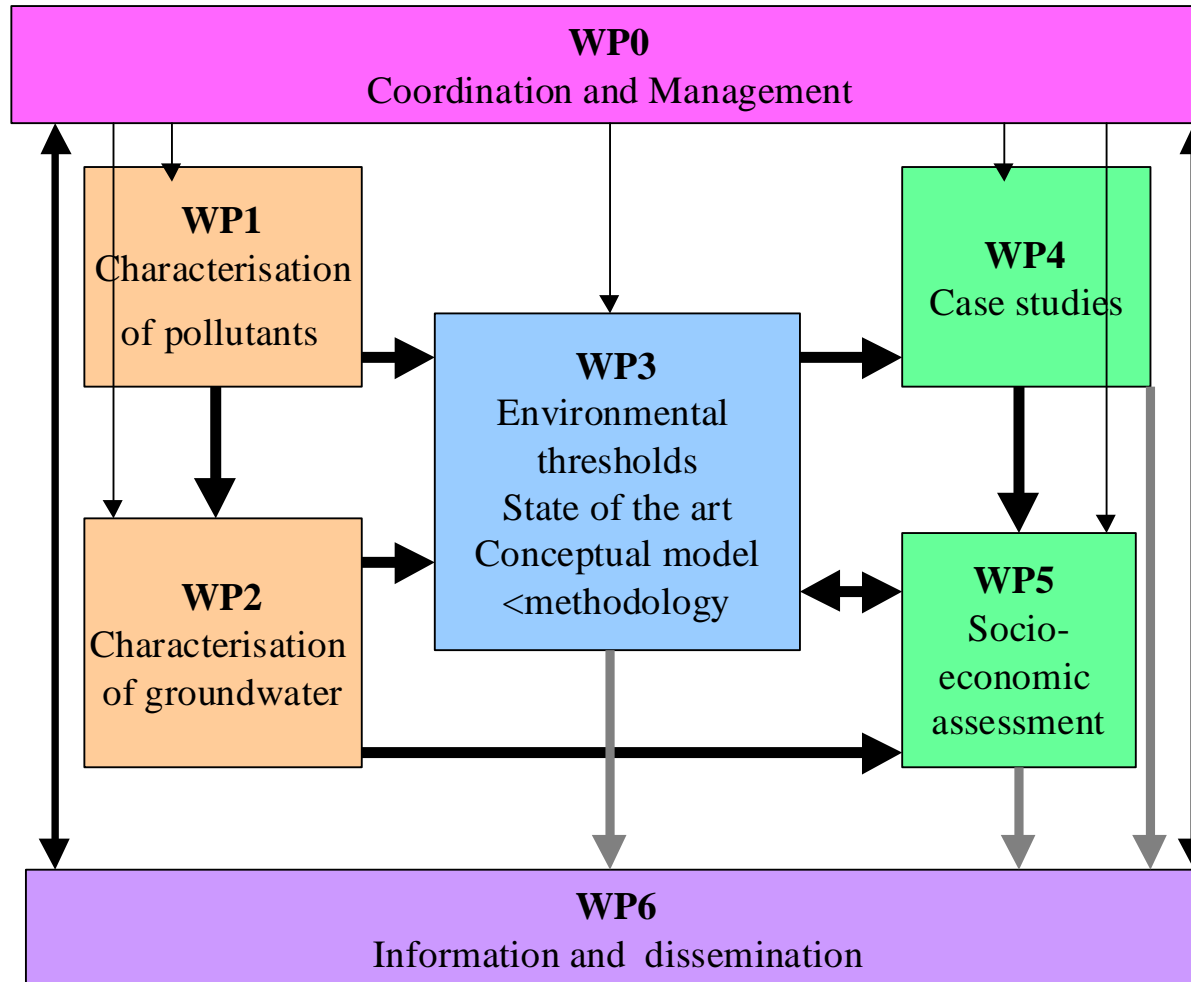
5. Consortium

Organisation name	short name	Country
Bureau de Recherche Géologiques et Minières	BRGM	FR
Umweltbundesamt GmbH	UBA-A	AT
Chancellor, Masters and Scholars of the University of Oxford	UOXF.AC	UK
Universiteit Gent	LAGH-UGENT	BE
Budapest University of Technology and Economics	BME	HU
Université de Liège, Aquapôle	ULG	BE
Flemish Institute of Technological Research	VITO	BE
Danish Environmental Protection Agency	DEPA	DK
Denmarks og Grønlands Geologiske Undersøgelse	GEUS	DK
ACTeon	Acteon	FR
Federal Environmental Agency-Germany	UBA-D	DE
Hessisches Landesamt fuer Umwelt und Geologie	HLUG	DE
Instituto Geologico y Mínero de Espana	IGME	ES
Environment Agency	EA	UK
Suomen ympäristökeskus (Finnish Environment Institute)	SYKE	FIN
National Agricultural Research Foundation	NAGREF	GR
Autorita' di Bacino del Fiume Tevere	ABTEVERE	IT
Forschungszentrum Juelich GmbH	fz-juelich	DE
Nederlandse Organisatie voor Toegepast Natuurwetenschappelijk Onderzoek TNO	TNO	NL
Universidade de Aveiro	UNI AVEIRO	PT
Geological Survey of Lithuania	LGT	LT
Vrije Universiteit Amsterdam	IvM	NL
Executive Environment Agency	EEA	BL
University of Tartu	UT	EE
Application Européenne de Technologies et de Services	AETS-Apave	FR
Akademia Gorniczo-Hutnicza	DHWP/AGH	PL
Office International de l'Eau	OIEAU	FR

About BRIDGE – Link with Working group C



About BRIDGE – Work Programme



About BRIDGE - Dissemination



> Partners

- 5 of the 17 partners involved
- Leader : IGME (Spanish geological survey); co-leader : BRGM
- Other partners : LGT, UBA-A, IOW

> Efforts

- WP6 dissemination 17.6 pers.months
- Total project : 454.34 p.m → 3.9% of the project efforts

> Objectives

- 1) Stimulate cooperation and interaction between the partners, the Advising Committee, the WG 2C and the Commission
- 2) Establish links with potentially interested stakeholders and end-users

> Main end-users

- Member States
- Policy makers in charge of the WFD implementation



Outline of the presentation



> **About BRIDGE**

> **Dissemination strategy and final report**

> **Conclusions – key messages**

Dissemination – 3 main activities



> **Cooperation between the project partners**

- How?
 - Annual meeting
 - Workshop
- Main challenges and success
 - Mixing scientists and policy makers!
 - Efficiency within a 2 years project

> **Communication to Working group 2C and European Commission**

- At least twice a year
- Month 21 : a specific workshop with WG2C back to back with the WG2C plenary meeting

Dissemination – 3 main activities



> Websites and others dissemination tools

- WFD-CIRCA network

INFORMATION LIBRARY DIRECTORY EVENTS NEWSGROUPS EMAIL SEARCH HELP

ENV:WFD CIRCA: "Implementing the Water Framework Directive"

Sign Out

Library > Top/F - Workin...sory Forum/c - WG C Groundwater

Abstract: Contents: 16 Subsection(s) - 1 document(s)

List items containing [] in Any Field [v]

	<input type="checkbox"/>	Title+	Items	Owner	Size	Date	Version	Language
		Previous Section						
	<input type="checkbox"/>	00 - LINKS to Guidance Documents and Technical Reports	21	scheiand@circa				
	<input type="checkbox"/>	01 - Mandate	2	rodrijh@cec				
	<input type="checkbox"/>	02 - List of participants	4	rodrijh@cec				
	<input type="checkbox"/>	03 - Meetings	12	rodrijh@cec				
	<input type="checkbox"/>	04 - Workshops	9	rodrijh@cec				
	<input type="checkbox"/>	05 - Progress reports to SCG	0	rodrijh@cec				
	<input type="checkbox"/>	BRIDGE	2	scheiand@circa				
	<input type="checkbox"/>	GENESIS	1	horvabb@cec				
	<input type="checkbox"/>	GW DRAFTING GROUPS - Overall issues	3	scheiand@circa				
	<input type="checkbox"/>	GW threshold value questionnaire MS answers	29	horvabb@cec				
	<input type="checkbox"/>	GW1 DRAFTING GROUP "MONITORING"	11	scheiand@circa				
	<input type="checkbox"/>	GW2 DRAFTING GROUP "PROTECTED AREAS"	4	scheiand@circa				
	<input type="checkbox"/>	GW3 DRAFTING GROUP "DIRECT AND INDIRECT INPUTS"	4	scheiand@circa				
	<input type="checkbox"/>	GW5 DRAFTING GROUP "MEDITERRANEAN"	1	scheiand@circa				
	<input type="checkbox"/>	WG C-2 - Drafting Group "Status compliance & Trends"	8	scheiand@circa				
	<input type="checkbox"/>	WG C-3 - Drafting Group "Integrated Risk Assessment and Risk Management"	1	scheiand@circa				
	<input type="checkbox"/>	Link to the Brochure 'Groundwater Protection in Europe' (2008)		scheiand@circa		26/03/2009	1.0	English (en)

Dissemination – 3 main activities

- 2 Newsletters (FR, EN, SP)
- Recommendations from each WP
- Project website www.wfd-bridge.net



Background cRiteria for the IDentification of Groundwater thrEsholds

BRIDGE

- Key info
- Overview
- Workplan
- Partners
- Public Information
(CIRCA - public area)
- Deliverables
(CIRCA - public area)
- Members ...login
(CIRCA - Member area)



BRIDGE

Background cRiteria for the IDentification of
Groundwater thrEsholds

Dissemination - Scientific communications



- Presentation of BRIDGE in scientific events

- EU level / National/regional level
- Oral presentations and posters

VI Simposio del Agua en Andalucía - Sevilla (Spain), June, 1-3, 2005: Criterios para la identificación de valores límite de contaminantes en agua subterránea. Proyecto BRIDGE (IGME)

EWRA 2005 (European Water Resources Association) – Menton (France), September, 7-10, 2005: Presentation of the BRIDGE Project - Background Criteria for the Identification of Groundwater Thresholds (BRGM and WP chairs)

Etc.....

- Papers

Coetsiers, M. & Walraevens, K. (2006).- Chemical characterization of the Neogene Aquifer, Belgium. Hydrogeology Journal, published online DOI 10.1007/s10040-006-0053-0.

Wendland.F., Blum.A., Coetsiers.M., Goroya.R., Griffioen.J., Grima.J., Hinsby.K., Kunkel.R., Marandi.A., Melo.T., Panagopoulos.A., Ruisi.M., Traversa.P., Vermooten.J.S.A., Walraevens.K. (2007), European aquifer typology: a practical framework for an overview of major groundwater composition at European scale, Environmental Geology, DOI 10.1007.

Etc.....

- Links with other EU/international networks

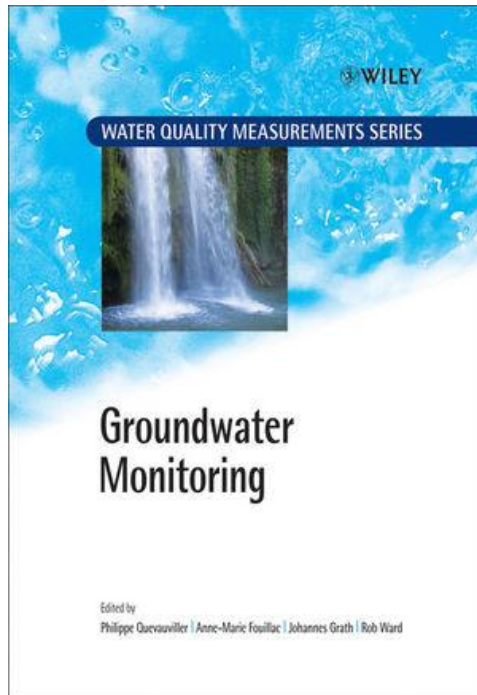
- ENWWIS (Euro-Mediterranean Information System)
- INBO (International Network of Basin Organizations)
- UNESCO



Dissemination – The story goes on after the project end!



- > Final CD-ROM with complete results
- > Papers
- > Books



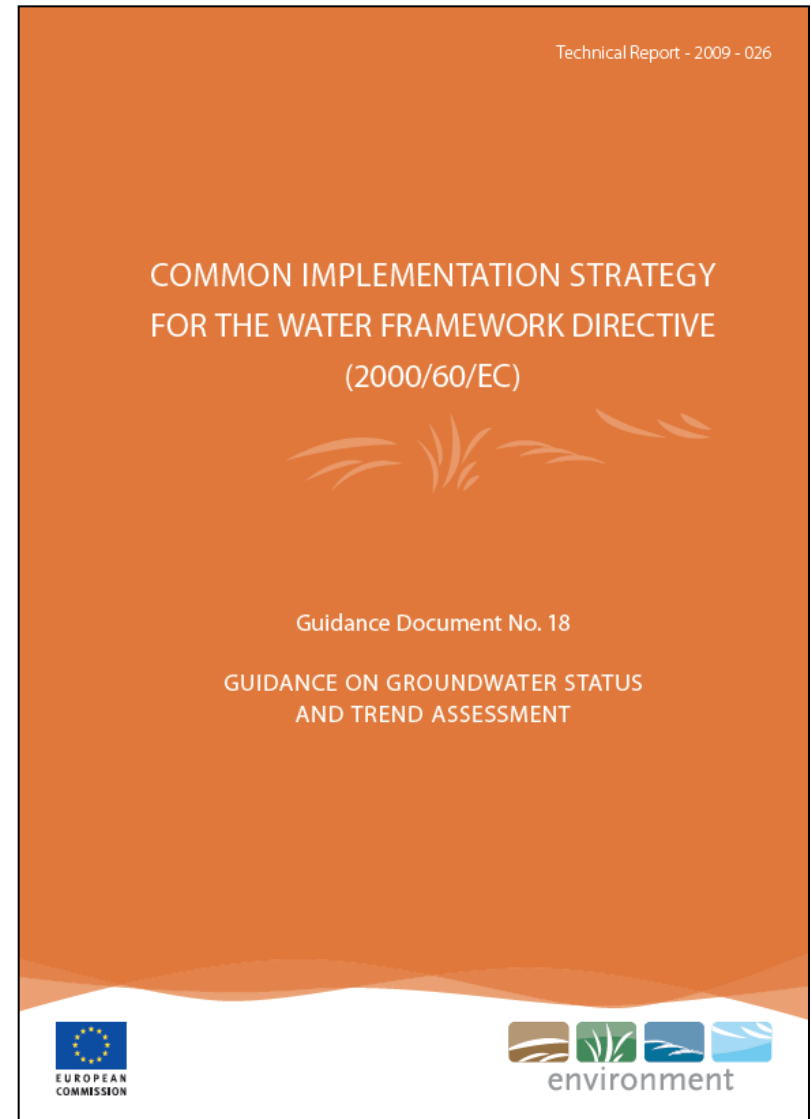
Dissemination – The story goes on after the project end!



- > BRIDGE results and recommendations have been used by Working Group 2C (DG-ENV and Member States) to draft a CIS (Common Implementation Strategy) guidance document

- > WGC2 mandate (2007-2009)
 - Use BRIDGE results
 - Draft a CIS guidance document to derive groundwater threshold values (TV)

- > Clearly written in the guidance document to use BRIDGE methodology to derive TV



Conclusions – Key messages of success



> Project team

- Scientists and « policy makers »
- Strong involvement of some project partners in national implementation of the WFD → key point for dissemination at EU level

> Project follow-up

- Role of the advisory board
- Strong involvement of DG-ENV and DG-RTD (from the project built-up to the dissemination phase)

Conclusions – Key messages of success



> **Strong interactions with WGC**

- From the beginning to the end of the project (not only at the end!)
- At the WP level through technical workshops
- Results used to draft CIS guidance document

> **Diversity of tools for dissemination**

- From scientific papers
 - To websites, newsletter...
- *Who are we talking to??*

Conclusions – Progress / difficulties

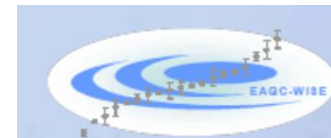


- Dissemination at regional level only ensured by (some) project partners. What about other EU countries?
- Hundred pages deliverables!
- English (French/Spanish) (and only!)
- Website future?





Conclusions – Other policy support projects

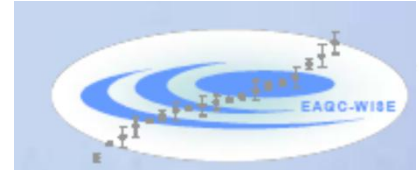


> EAQC-Wise

European Analytical Quality Control in support of the WFD via the Water Information System for Europe

- **STREP, 6th FP**, programme “Integrating and strengthening the European Research Area”
- **Priority 8** “Scientific Support to Policies”, section 1.1.5 “Environmental assessment (soil, water, air, noise, including the effects of chemical substances)”
- **Coordination**
 - ❖ Coordination : BRGM
 - ❖ Scientific coordination : JRC-IRMM
- **Duration**
 - ❖ 36 months
 - ❖ Start date: 1st December 2005
- **Contract N°022603**

Conclusions – Other policy support projects



> EAQC-Wise

European Analytical Quality Control in support of the WFD via the Water Information System for Europe

- Context: WFD monitoring networks (groundwater, surface waters, marine waters)

- Need:

=> an appropriate analytical quality control system has to be established across all EU monitoring laboratories to ensure the reliability and comparability of these data.

- Main objectives:
 - Review of existing QA/QC tools and identification of the gaps
 - To suggest a quality control system based on research and scientific materials and that fit policy needs

→ *Strong interaction with policy makers along the project (2 specific workshops, communication to the « Chemical Monitoring Activity » of the EU)*